

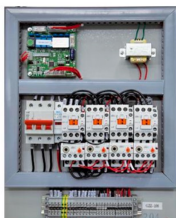
# FORWARD & BACKWARD TILTING WASHER EXTRACTOR

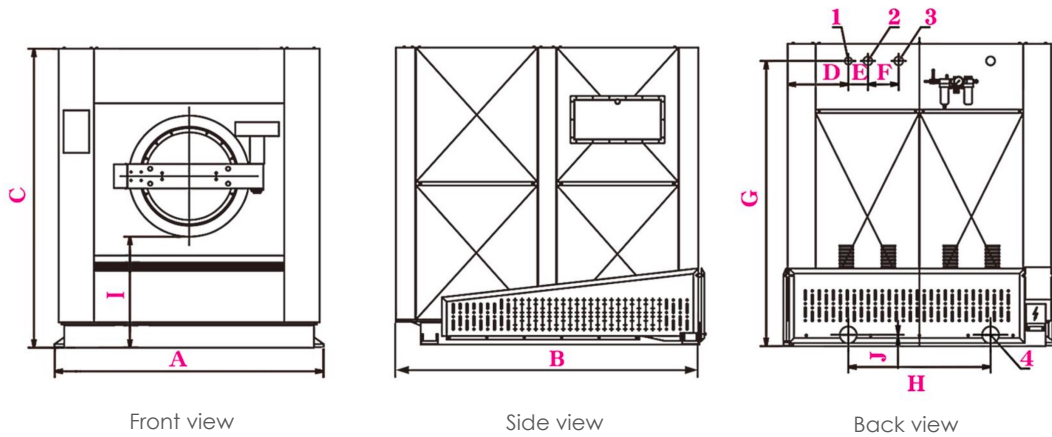
XGQ-100FQ XGQ-160FQ XGQ-200FQ XGQ-160FSQ XGQ-200FSQ



## STANDARD FEATURES

- Open pocket cylinder
- Heavy duty frame and suspension system
- Full suspension drum design with hydraulic support system which effectively isolate the vibration during washing
- Inner drum, outer drum and panels are fabricated using high grade stainless steel materials for durability and anti-corrosion
- Heavy duty springs and shock absorbers
- Industrial bearing and seals
- Single motor inverter drive with direct V-belt drive
- High G-Force Extraction
- Microprocessor controller 30 programmable formulas
- Programmable water level, temperature, time and cool down
- Programmable water, distribution and extract speeds
- Opening, closing, tilting and unloading are performed automatically
- Signal at end of washing cycle
- Vibration safety switch
- Air operated drain valve and safety door lock
- 5 Compartments supply injection
- No special floor foundation needed for machine installation





### Connector Size

Model	A	B	C	D	E	F	G	H	I	J	1.Steam inlet	2.Cold water inlet	3.Hot water inlet	4.Drainage outlet
XGQ-100FQ	1700	1900	2050	390	140	220	1755	726	779	80	DN25	DN40	DN40	2-DN100
XGQ-160FQ	1940	2300	2150	433	140	220	2030	1016	797	80	DN40	DN50	DN50	2-DN100
XGQ-200FQ	2250	2500	2240	447	190	200	1752	1154	812	80	DN40	DN50	DN50	2-DN100
XGQ-160FSQ	2004	2448	2264	433	140	220	2142	1016	901	70	DN40	DN50	DN50	2-DN100
XGQ-200FSQ	2234	2622	2392	415	140	220	2264	1154	903	80	DN40	DN50	DN50	2-DN100

### Main Parameter

Description		XGQ-100FQ	XGQ-160FQ	XGQ-200FQ	XGQ-160FSQ	XGQ-200FSQ
Rated capacity (dry load)	kg	100	160	200	160	200
Inner drum x length	mm	∅ 1240 x 840	∅ 1460 x 960	∅ 1600 x 1067	∅ 1460 x 960	∅ 1600 x 1067
Outer drum x length	mm	∅ 1324 x 953	∅ 1544 x 1104	∅ 1718 x 1237	∅ 1544 x 1104	∅ 1720 x 1237
Washing/balancing speed	rpm	30/60	27/55	25/52	27/55	25/52
Middle extracting speed	rpm	350	300	290	300	290
High (1-4) extracting speed	rpm	680	630	620	630	620
Motor power	kw	7.5	22	30	22	30
Tilting angle of unloading		18°	15°	15°	15°	15°
Steam pipe ∅	DN	25	40	40	40	40
Cold/hot water pipe ∅	DN	2 x 40	2 x 50	2 x 50	2 x 50	2 x 50
Water drain pipe	mm	∅114(2) 2 pipes				
Connecting pipe of compressed air	mm	∅ 8	∅ 8	∅ 8	∅ 8	∅ 8
Steam pressure	Bar	4 - 6	4 - 6	4 - 6	4 - 6	4 - 6
Water pressure	Bar	2 - 4	2 - 4	2 - 4	2 - 4	2 - 4
Compressed air pressure	Bar	4 - 6	4 - 6	4 - 6	4 - 6	4 - 6
Water consumption per cycle	L	1435	2000	2400	2000	2400
Power consumption per cycle	kw	1.8	2.2	2.6	2.2	2.6
Steam consumption per cycle	kg	50	70	85	70	85
Flow of air compressor	m <sup>3</sup> /min	0.1	0.13	0.13	0.13	0.13
Power supply	V/P/Hz	380/3/50				
Dimension(W/D/H)	mm	1700/1900/2050	1940/2300/2150	2250/2500/2240	2004/2448/2264	2234/2622/2392
Weight	kg	3720	5500	6528	6000	7400

All specifications subject to change without notice.